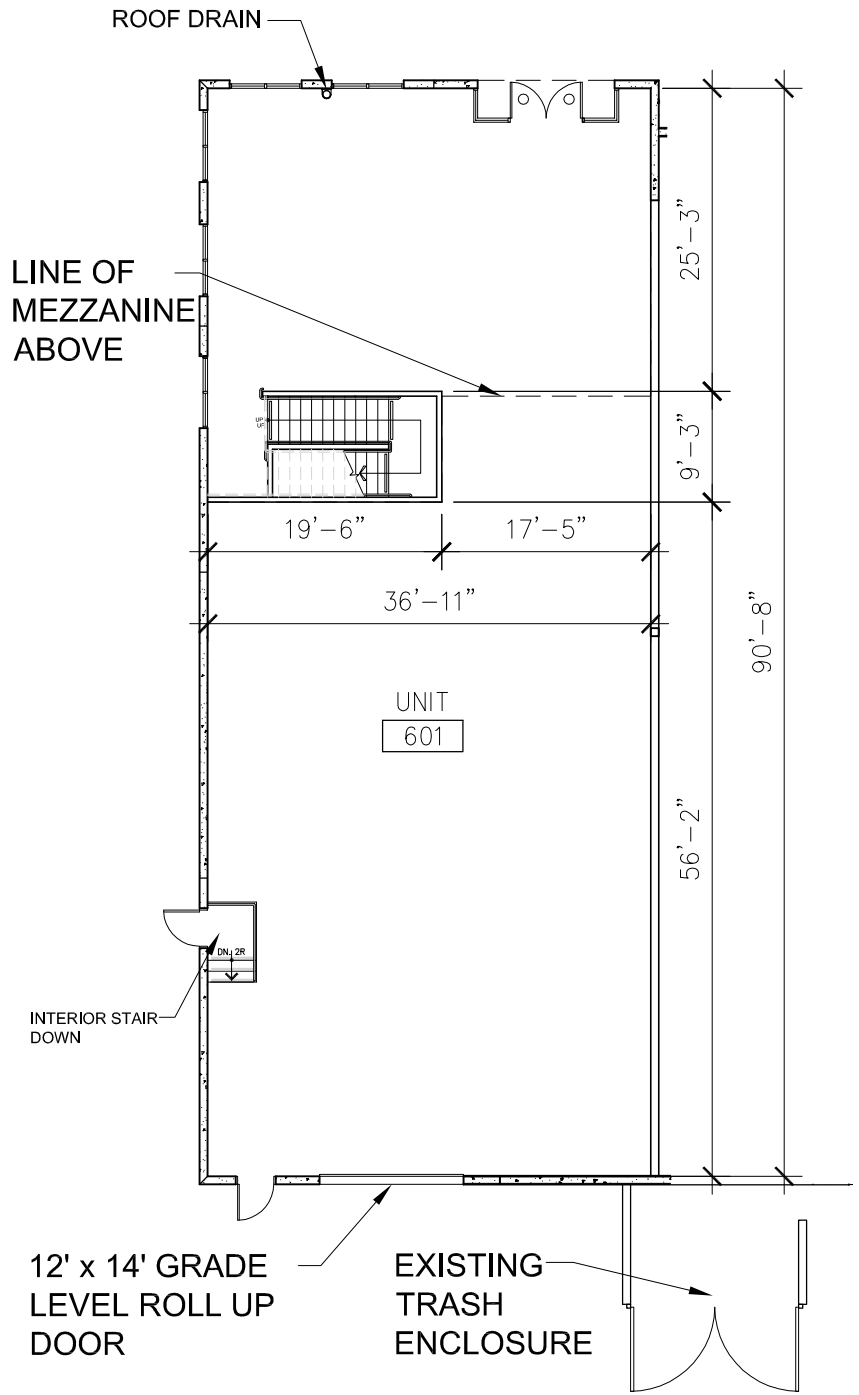


POSSIBLE MEZZANINE LAYOUT



SPECIFICATIONS:

- 24' CLEAR HEIGHT IN WAREHOUSE
- 200 AMP 3 PH. 120/208 VOLT POWER
- FIRE SPRINKLER DENSITY: .45/3000

UNIT 601

1ST FLOOR =	3,490 S.F.
MEZZANINE =	1,000 S.F.
COMMON =	70 S.F.
<b>TOTAL =</b>	<b>4,560 S.F.</b>



BUILDING 6-UNIT 601

CHULA VISTA COMMERCE CENTER

CHULA VISTA, CA



WARE MALCOMB

architecture www.waremalcomb.com  
 planning p 858.638.7277  
 interiors

1/16"=1'-0"  
 5/12/2006